

**LIFE VALUE CREATOR**  
**TAEYOUNG E&C**

**TAEYOUNG**

**LIFE  
VALUE  
CREATOR**  
**TAEYOUNG**



CONTENTS

04 MESSAGE FROM CEO  
05 SPIRIT OF TAEYOUNG  
06 HISTORY OF TAEYOUNG  
08 PORTFOLIO OF WORKS  
28 AFFILIATED COMPANY



Honam Expressway

## MESSAGE FROM CEO

TAEYOUNG E&C  
stands  
ready to face  
the challenges  
of the future.

Since our foundation in 1973, TAEYOUNG E&C has experienced steady growth in all areas of the construction businesses, ranging from construction and civil engineering to plant construction and housing development.

As the builder of Asia's largest sewage treatment plant, we are the first and most experienced contractor when it comes to waterworks and sewage construction. We are also highly competitive in other areas, including plant construction and civil engineering (e.g. the construction of highways, bridges, subways, infrastructure facilities for new cities and port facilities).

Furthermore, through our high-end apartment brand "DESIAN," we are creating a new housing culture and providing our customers with a more prosperous lifestyle. We are also engaged in diverse project financing-based development projects (e.g. the Gwangmyeong KTX Station Area Development Project) as well as a large-scale 9.9 million-square-meter integrated resort development in Gyeongju.

As for future growth industries, we at TAEYOUNG E&C are actively engaged in new renewable energy projects, such as wind energy and solar power, as well as environmental plant projects (e.g. biogas plants).

TAEYOUNG E&C seeks to become an industry leader that delivers outstanding future client value. By striking the right balance between growth and stability while maintaining our principles and integrity, we will strive to be the company ever more trusted and loved by our clients.

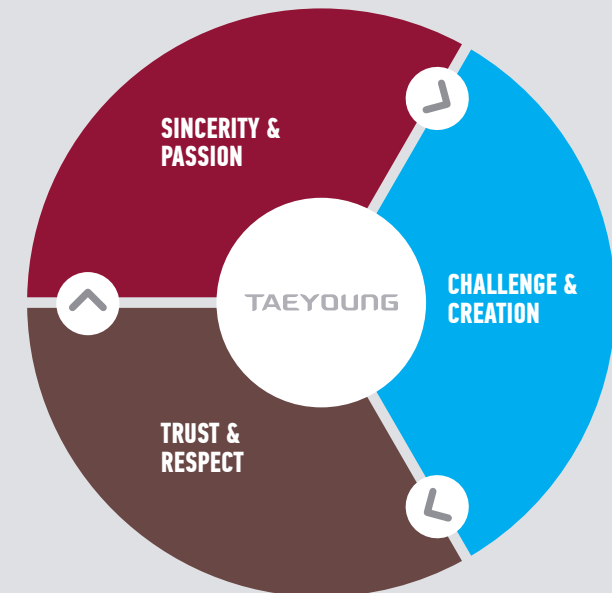
We will always stand by you, in our pursuit of endless innovation.

Thank you.



CEO, VICE-CHAIRMAN  
**LEE JAE-GYU**

## SPIRIT OF TAEYOUNG



### SINCERITY & PASSION

- We do our sincere best in everything we do. Even when tackling the smallest challenges, we give our all. Such dedication is what has made TAEYOUNG E&C a successful company.
- People are beautiful when they care for each other. What really moves people is sincere care and commitment. That's the spirit of TAEYOUNG E&C.
- Developing the best possible products and services requires the devotion of each employee in their respective positions and their endless efforts to achieve common goals. This is the passion of TAEYOUNG E&C.

### CHALLENGE & CREATION

- Original thinking and progressive actions are what empower us to transform dreams into reality.
- We have the volition to pioneer the future without fearing obstacles. This is our spirit of meeting life's challenges.
- We believe maintaining the status quo is a regression and pursue relentless change and innovation. This is our creative spirit.

### TRUST & RESPECT

- What drives a company to success is the harmony and unity of its members.
- The trust of our clients is the reason behind our survival. We believe that the trust of our clients comes from our respect for them. This is TAEYOUNG E&C's spirit of trust and respect for our clients.
- We put people first, giving consideration and respect to all stakeholders, that is, our shareholders, investors, partners, employees, and more broadly, the nation and society. This is our spirit of trust and respect for our stakeholders.
- We strive to maintain a productive employer-employee relationship through mutual respect. This is our spirit of trust and respect for our employees.



## HISTORY OF TAEYOUNG

## 1970

- 1973 Obtains construction business license  
(civil engineering & construction)  
Establishes Taeyoung Industry Inc.  
(Capital stock: KRW 3 million)  
Appoints Mr. Yoon Se-young as CEO
- 1979 Completes the Seonyu Water Source Expansion  
(200,000 tons per day) Project  
Acquires Ulsan Tank Terminal Inc.

## 1980

- 1981 Registers as a designated housing contractor  
(No. 79, Ministry of Construction)
- 1984 Establishes Ulsan Silo Inc.
- 1985 Changes corporate name  
from Taeyoung Development Inc. to Taeyoung Inc.
- 1987 Industrial Service Medal  
(for exemplary tax payment)
- 1989 Launches IPO (Taeyoung Inc.)  
(Capital stock: KRW 15.6 billion)  
Establishes the Seoam Academic Scholarship  
Foundation Establishes Taeyoung Leisure Inc.  
Changes corporate name Ulsan Silo Inc.  
to Taeyoung Industry Inc.

## 1990

- 1990 Establishes the Seoul Broadcasting System (SBS)  
Obtains license for overseas construction business  
Establishes Taeyoung Chemicals Inc.  
Wins the Bronze Tower Order of Industrial Service Merit
- 1992 Wins Industrial Service Medal  
(for exemplary tax payment)
- 1995 Relocates headquarters  
(252-5, Gongdeok-dong, Mapo-gu, Seoul)  
Taeyoung Industry Inc. is merged into Taeyoung Chemicals Inc.
- 1996 Wins the Silver Tower Order of Industrial Service Merit  
(for construction excellence)  
Acquires the ISO 9001 certification from DNV, Norway  
Wins the Construction Technology Award  
(for the portable steel truss shoring system)  
Establishes Taeyoung Entertainment Inc.
- 1998 Wins the Best Value Management Award  
(from the Korea Management Association)
- 1999 Receives the Korea Construction Culture Award  
(from Seoul Economic Daily)  
Receives the Prime Minister's Citation  
(for resource saving excellence)  
Dedicates Taeyoung Mapo apartment complex  
(Daeheung-dong, Mapo-gu, Seoul)  
Dedicates the Gangbuk Water Purification Plant

## 2000

- 2000 Receives the Industrial Service Medal  
(for construction excellence)  
Acquires the ISO 140001 certification from DNV, Norway
- 2001 Receives the 2nd Korea Construction Management Award
- 2002 Completes the Gyeongbu Expressway Gumi-Geumho  
Section Eight-Lane Expansion Project  
Introduces the apartment complex brand "DESIAN"  
Acquires the KOSHA 18001 and OHSAS 18001 certifi-  
cations Receives the Gold Tower Order of Industrial  
Service Merit (on Construction Day)  
Changes corporate name from Taeyoung Chemicals Inc.  
to Taeyoung Industry Inc.
- 2003 Dedicates SBS Broadcasting Center in Mok-dong, Seoul
- 2004 Receives Presidential Citation (for Gwangju Metro)  
Receives Grand Award at the 2nd Korea Ethical  
Management Awards
- 2006 Minister of Construction and Transportation Award  
(Construction Cooperation Promotion Achievement Award)  
Gyeongju The Honors C.C Grand Open
- 2007 Gold Tower Industrial Medal Award  
(60th anniversary of construction)  
Completed Yeouido Taeyoung Building  
Changes corporate name to Taeyoung E & C Co.,Ltd
- 2008 Establishes SBS Media Holdings  
Adds TYN Inc. as an affiliate company

## 2010~

- 2010 Signs joint management agreement  
for water business(TAEYOUNG E&C,  
Entec, SK Chemicals and SK E&C)
- 2011 Establishes Ho Chi Minh City Office in Vietnam  
Opens BlueOne Waterpark  
Establishes Al Amarat Office in Oman  
Establishes BlueOne as representative leisure industry  
brand
- 2012 Dedicates SBS Prism Tower
- 2013 Opens Inje Speedium, Korea's first auto theme park  
Obtains ASME certification
- 2015 Appoints Mr. Lee Jae-gyu as CEO  
Establishes Dhaka Office in Bangladesh
- 2017 Changes brand identity of DESIAN, launches sub-brands
- 2019 Appoints Mr. Yoon Se-young as Honorary Chairman,  
Mr. Yoon Suk-mynn as Chairman and Mr. Lee Jae-gyu  
as Vice Chairman
- 2020 Ranked 13th among domestic companies  
in construction & civil engineering capability  
Taeyoung Group Conversion of holding company  
system, TY Holdings Incorporated
- 2021 Korean Landscape Architectural Award, The Recipient  
of Presidential Prize





# THE CREATIVE WINDOW

PORTFOLIO OF WORKS





# DEVELOPMENT WORKS

## URBAN DEVELOPMENT

Developing national land plans, supplying healthy urban environments, expanding private-sector development.

At the heart of these endeavors to transform Korea lie TAEYOUNG E&C's innovative passion and determination to meet life's challenges. Through systematic and steady public-private partnerships with varying public partners, including the Korea Land and Housing Corporation (LH) and municipalities across the country, TAEYOUNG E&C is actively engaged in the formation of pleasant urban environments and the development of unique innovative spaces that offer diverse functions such as residential, non-residential, commercial, ecological and cultural uses. From a long-term perspective, we have been conducting proactive business analysis and the planning and marketing of products that reflect the needs of our clients while establishing close collaboration among departments. With these efforts, TAEYOUNG E&C is leading the growth of regional culture and suggesting a window for a more creative future.

### Key achievements

Changwon Unicity, Gwangmyeong U-Planet, Jeonju Eco-City, Hanam Gamil District, Gwacheon Knowledge Information Town, Yangsan Sasong District, Daegu Donam District, Buhceon Ojeong Troop Transfer and City Development Project, Gyeonggi Gwangju Private Park Development Project, Gimpo Geolpo District 4 Urban Development Project



#### 01 Changwon Unicity

Location: The entire region of Jung-dong, Uchang-gu and Gamgye-ri, Buk-myeon of Changwon-si

Land area : 1,062,083㎡

Project details : Apartment houses 300,981㎡, commercial lands 54,013㎡, support facilities 82,882㎡, urban infrastructure 219,800㎡, parks/green areas 305,987㎡



#### 02 Gwangmyeong U-Planet

Location : Complex area for residential and commercial purposes in the residential district near Gwangmyeong Station

Land area : 311,286㎡

Project details : Apartment houses 280,131㎡, sales facilities 10,228㎡, business facilities 20,865㎡



#### 03 Jeonju Eco-City

Location : The entire region of Songcheon-dong, Jeonju-si, Jeollabuk-do

Land area : 1,988,467㎡

Project details : Apartment houses 492,976㎡, rental houses 131,453㎡, detached houses 97,197㎡, commercial facilities 37,895㎡, business facilities 3,030㎡



# DEVELOPMENT WORKS

## RESIDENTIAL

With the four core values of Practical Space, Flawless Technology, Aesthetic Design and Relentless Commitment, our housing brand DESIAN will strive to create better living environments. Featuring cozy and convenient spatial designs, futuristic yet comfortable comprehensive living environments and sophisticated interior & exterior designs, DESIAN is an apartment brand loved by people who seek both practicality and beauty in everyday living. Its delicate designs and optimal living solutions make DESIAN stand out from the pack.

The brand slogan "Design, Detail, DESIAN" reflects the brand's volition to cater to all customer needs.

With customer satisfaction as its number one priority, DESIAN will continue to move forward.

### Key achievements

Jeonju Eco-City Desian, Gwangmyeong U-Planet Desian, Yangsan Sasong The Sharp Desian, Daegu Donam Hillstate Desian, Yongin Suji Desian, Changwon Seokjeon MetroCity, Seongnam Pangyo Desian, Hwaseong Dongtan Desian, Mapo West River Desian, Hyochang Zone 6 Desian, Dongdaemun Jangan Desian, Uiwang Ojeon Desian, Masan MetroCity I·II, Daegu Suseong Desian, Busan Yeonsan Lotte Castle & Desian



01

#### 01 Jeonju Eco-City Desian 7,12BL

Location : Sebyeong-ro, Doekjin-gu, Jeonju-si, Jeollabuk-do

Land area : 216,744m<sup>2</sup>

Project scale : 2 floors below the ground - 29 floors above the ground

Project details : Apartment houses



02

#### 02 Yongsan Desian Foret

Location : 227, Hyochangwon-ro, Yongsan-gu, Seoul

Land area : 15,424.10m<sup>2</sup>

Project scale : 3 floors below the ground - 14 floors above the ground

Project details : Apartment houses



03

#### 03 Masan MetroCity II

Location : 80, Samho-ro, Masanhoewon-gu, Gyeongsangnam-do

Land area : 70,572m<sup>2</sup>

Project scale : 3 floors below the ground - 55 floors above the ground

Project details : Apartment houses



# DEVELOPMENT WORKS

## COMMERCIAL & OFFICE

Taeyoung E&C is conducting development projects across various areas ranging from housing, commercial facilities, business facilities to support facilities.

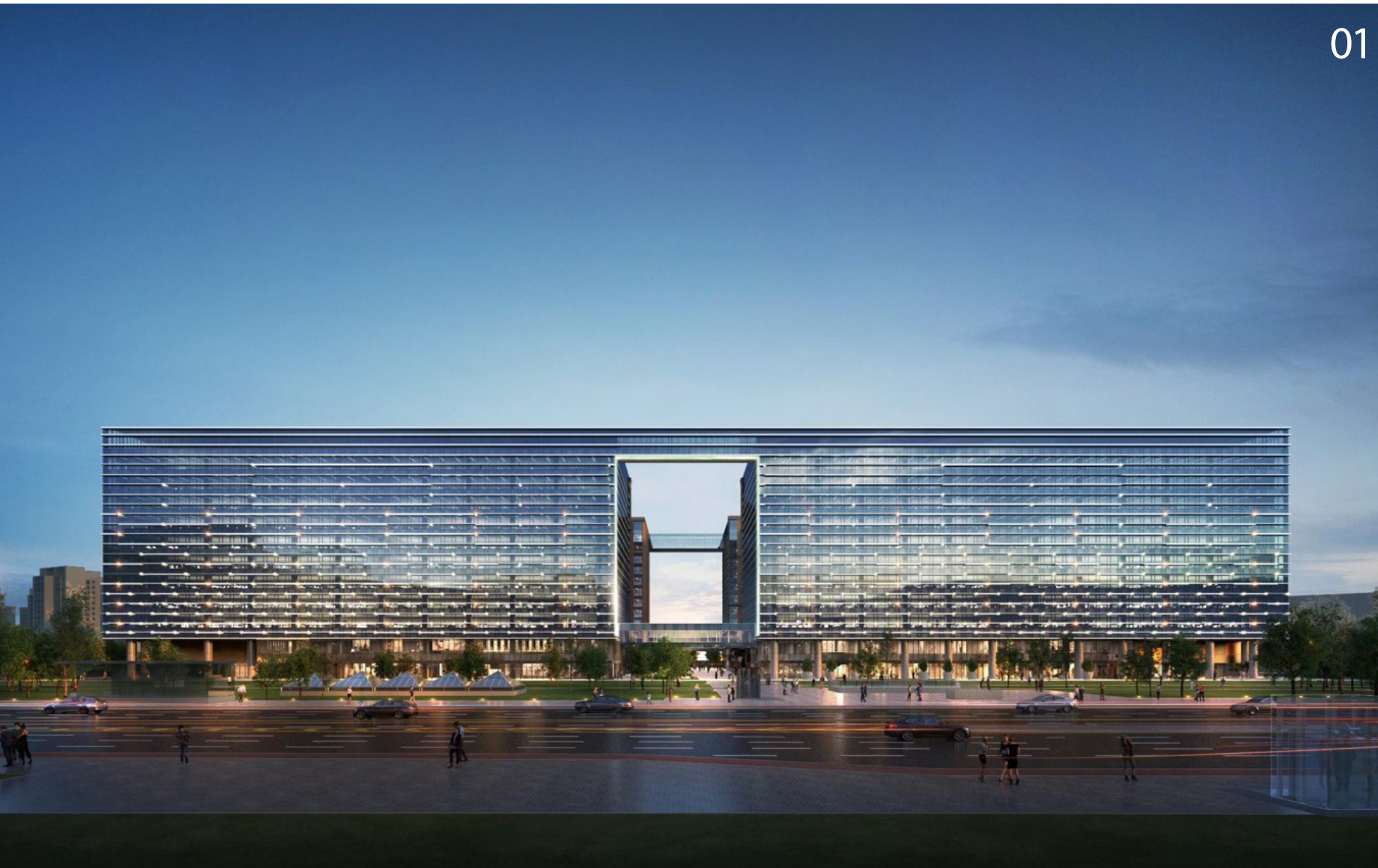
For this purpose, we are differentiating ourselves from other brands by launching non-residential brands including Urban Bricks, a complex commercial facility, Desian Plex, a knowledge industry center, Desian Studio, an officetel, and by presenting spaces optimized to each facility with specialized designs unique to our brand.

We are leading customer satisfaction with a top-quality level of completion through stringent construction management. Taeyoung E&C will continue to strive to create our customers' future values by seeking the optimal development direction while prioritizing our customers and by providing the best quality and services.

### Key achievements

Gwangmyeong U-Planet Urban Bricks, Changwon Urban Bricks, Sinnae Desian Plex, Anyang Hogye Desian Plex, Seongsu W Center Desian Plex, Busan Seomyeon Desian Studio

01



#### 01 Magok CP4 Complex Development Project

Location: Magok District Special Planning Zone CP4

Land area: 39,050㎡

Facility scale: 7 floors below the ground - 12 floors above the ground

Project details: Business facilities, hotels, sales facilities

02



#### 02 Seongsu W Center Desian Plex

Location: 280-6, Seongsu-dong 2-ga, Seongdong-gu, Seoul

Land area: 8,436㎡

Facility scale: 7 floors below the ground - 12 floors above the ground

Project details: Knowledge detail center

03



#### 03 Suwon City Hall Complex Development Project

Location: 3, 1125-1, Ingye-dong, Paldal-gu, Suwon-si, Gyeonggi-do

Land area: 7,097㎡

Facility scale: 7 floors below the ground - 17 floors above the ground

Project details: Residential accommodations, offices, shopping arcade



# DEVELOPMENT WORKS

## SOC Social Overhead Capital

TAEYOUNG E&C completed Korea's first privately-funded environment infrastructure project.

The company has since demonstrated its competence through diverse businesses.

By successfully completing an SOC project in a new field, TAEYOUNG E&C received recognition for its reliability and business capability.

Our expertise and knowhow gained from constructing sewage treatment facilities have become new standards in the environment industry, with the company steadily gaining a strong foothold in the environment infrastructure market. Based on stable financing and superb technological prowess, TAEYOUNG E&C is contributing significantly to the expansion of infrastructure, including environmental facilities, roads, ports and railways.

### Key achievements

Roads	Daegu 4th Ring Way, Guri-Pocheon Expressway, Masan-Changwon roads
Railroads	Shinbundang Line (Gangnam-Jeongja) double-track subway, Shinbundang Line (Jeongja-Gwanggyo) double-track subway, Daegok-Sosa double-track subway
Industrial complex	Yangsan Sanmak Industrial Complex, Seoun General Industrial Complex, Jincheon Songdu General Industrial Complex, Yangsan Seokgye General Industrial Complex
Plants	Jeonju-si Comprehensive Recycling Center, Yeongcheon/Gyeongsan Organic Waste Energy Facility, Pocheon-si LNG Combined Cycle Power Plant, Gyeongsan-si Support Recovery Facility
Environment	Namyangju Jingeon Blue Water Center (secondary), National Wastewater Public Treatment Facility (east area), Jeonju-si Sewage Treatment Facility
Leisure	Inje Speedium



01

### 01 Incheon Mansu Public Sewage Treatment Facility Expansion

Location : The entire region of 500-161, Seochang-dong, Namdong-gu, Incheon  
 Project details : Public Sewage Treatment Facility (expansion) Q=35,000m<sup>3</sup>/day  
 Sewage Treatment Water Reuse Facility (new establishment) Q=50,000m<sup>3</sup>/day  
 Existing facility (Q=70,000m<sup>3</sup>/day) integrated operation included



02

### 02 Jeonju Comprehensive Recycling Town

Location : The entire region of 749-5, Samcheondong 3-ga, Wansan-gu, Jeonju, Jeollabuk-do  
 Land area : 44,095m<sup>2</sup>  
 Project details : Turning of food waste into resources, sorting of recyclables, treatment of bulky waste, turning sewage sludge into resources and reducing them



03

### 03 Gimhae Daedong High-Tech Industrial Complex Creation Project

Location : The entire region of Wolchon-ri, Daedong-myeon, Gimhae-si, Gyeongsangnam-do  
 Land area : 2,803,858m<sup>2</sup>  
 Project details : Industrial lands, multi-functional/logistics lands, residential/support lands



# BUILDING WORKS

Based on solid, ethical management, TAEYOUNG E&C has been flawlessly executing government projects requiring comprehensive construction capability and expertise, thereby emerging as a strong new player in the construction industry.

With the reliability as an industry leader, coupled with advanced design expertise, accumulated knowhow and advanced construction capability, TAEYOUNG E&C is creating client value that goes beyond architectural technology and aesthetics, thereby helping to make our lives that much better.

Imbued with construction craftsmanship, the Masan Baseball Stadium in Changwon, the new Gyeonggi Provincial Office (under construction), the National Assembly Members' Office Building 2, the Yeouido Post Office and other construction feats have demonstrated our superlative construction expertise. Going forward, TAEYOUNG E&C will continue to spearhead Korea's construction culture through relentless technological innovation and R&D efforts.

## Key achievements

Changwon Masan Baseball Stadium, Gyeonggi-do Office Building  
Yeouido Post Office  
2nd National Assembly Hall, Water Industry Cluster  
Heavy Ion Accelerator Facility, Judicial Training Institute and Civil Worker Training Center  
SBS Mokdong Broadcasting Center, Seongnam Art Center  
Korea International Exhibition Center (KINTEX), Pangyo Business Hotel  
Gasan-dong Knowledge Industry Center  
Pyeongchon Station Knowledge Industry Center  
Bupyeong J-Tower



### 01 Changwon Masan Baseball Stadium

Location : 63, Samho-ro, Masanhoewon-gu, Changwon-si, Gyeongsangnam-do  
Land area : 79,529m<sup>2</sup>  
Project scale : 1 floor below the ground - 4 floors above the ground  
Project details : Sports facilities



### 02 Gyeonggi-do Office Building

Location : 184, Iui-dong, Yeongtong-gu, Suwon-si, Gyeonggi-do  
Land area : 89,210m<sup>2</sup>  
Project scale : Provincial office 4 floors below the ground - 22 floors above the ground, provincial assembly 4 floors below the ground - 12 floors above the ground,  
Project details : National facilities



### 03 Busan International Art Center

Location : 60, Yeonji-dong, Jin-gu, Busan  
Land area : 29,408m<sup>2</sup>  
Project scale : 1 floor below the ground - 3 floors above the ground  
Project details : Cultural and assembly facilities (performance hall)



# CIVIL WORKS

The establishment of Korea's national foundation and its miraculous economic development.

At the heart of these historic feats stand TAEYOUNG E&C's 46-year tradition of solid construction capability and determination to meet life's challenges.

Through diverse civil engineering projects (e.g. highways, bridges, subways and infrastructure facilities for new cities), we have steadily contributed to the development of national infrastructure while being highly acclaimed for our exceptional expertise and knowhow. Our technological prowess and rich construction experience have served as the foundation that has allowed us to become an industry leader.

## Key achievements

- |           |  |
|-----------|--|
| Roads     | Gyeongbu Expressway (Gumi-Dongdaegu), Honam Expressway, Jungang Expressway, Daegu 4th Ring Way, Busan Ring Way, Cheongju Technopolis Access Road, Expressway No. 14 (Hamyang-Changnyeong), Jungbu Naeryuk Expressway (Sangju-Chungju), Sejong-Pocheon Expressway (Anseong-Guri), Expressway No. 400 (Paju-Yangju/Pocheon), Guri-Pocheon Expressway |
| Railroads | Subway Line 5 (Yeongdeungpo section), Subway Line 8 (Amsa-Byeolnae), Incheon Subway Line 2, Daegu Metro Line 3, Seohae Line double-track subway (Hongseong-Songsan),   |
| Complexs  | Creation of housing sites in the Sangam District (Sections 2 and 3), relocation of the Jeonju 00 troop, relocation of the Changwon 00 troop, creation of housing sites in Yangsan Sasong   |
| Others    | Ulsan New Port Southern Pier, BlueOne Bomun C.C, Mungyeong Golf Course, Inje Speedium  |



01

### 01 Paju-Yangju Pocheon Expressway

Location : The entire region of Yongam-ri to Hoeam-dong, Eunhyeon-myeon, Yangju-so, Gyeonggi-do

Project details : 4-lane new establishment  
(L=4.62km, 9 1,502m bridges, 1 389m tunnel, 2 access facilities)



02

### 02 Seohae Line Double-Track Subway

Location : The entire region of Sapgyo-eup, Yesan-gun and Hapdeok-eup, Dangjin-si of Chungcheongnam-do

Project details : Double-track subway  
(L=8.6km, 2 2,852m long bridges, 3 410m small bridges)



03

### 03 Yangsan Sasong Housing Site

Location : The entire region of Sasong-ri and Naesong-ri, Dong-myeon, Gyeongsangnam-do

Land area : 2,766,465㎡

Project details : Housing site creation construction



# CIVIL WORKS

## PLANT WORKS

From industry plants (e.g. tank terminals, silos, chemical plants and animal feed plants) to environmental and energy plants, TAEYOUNG E&C has achieved great success, capitalizing on its experience in diverse business areas.

Having constructed mechanical biological treatment (MBT) plants to treat municipal waste, biogas plants to treat organic waste and automated waste collection systems, we have the best track record and capability in the environment, energy and plant market segments.

We are also actively pursuing the renewable energy business as our new growth engine. Even in the fields of large-scale energy plants (e.g. cogeneration power plants) and environmental & renewable energy plants, we have been developing our own exclusive and proprietary technologies. Going forward, building upon past experiences of success, TAEYOUNG E&C will strive to grow by advancing its businesses.

### Key achievements

Siheung Green Center, Songdo Resource Circulation Center, Goyang Biomass Energy Facility, Paju Unjeong Environmental Management Center, Happy City Waste to Fuel Conversion Facility



01

#### 01 Ulsan Taeyoung Industry

Location : 459, Yongjam-ro, Nam-gu, Ulsan

Project details : Tank terminal project and silo project

Tank terminal : 260,850KL (110 tanks)

Silo : 184,000 tons (94 Bin, 2 buildings in Pyeongchang)



02

#### 02 Busan Municipal Waste Fuel Conversion and Power Generation Facility

Location : 32, Cheyukgongwon-ro 52-beon-gil, Gangseo-gu, Busan (Saenggok-dong)

Land area : 97,330m<sup>2</sup>

Project details : Municipal waste fuel conversion facility 900 tons/day, solid fuel boiler 500 tons/day, 25MW power generation facility, Korea's first SRF power generation facility



03

#### 03 Pocheon LNG Combined Thermal Power Plant

Location : 17, Pocheon-ro 2797beon-gil, Changsu-myeon, Pocheon-si, Gyeonggi-do

Project details : LNG Combined Thermal Power Generation 1,560MW (780MW \* 2 series)



# CIVIL WORKS

## ENVIRONMENT WORKS

Taeyoung E&C, which values the importance of the environment above all else, is the top player in the water business field with a record of carrying out various water and sewage constructions including the Gangbuk water purification plant, the largest water purification facility in Asia, as well as the Suwon sewage treatment plant with advanced biological treatment technology using acid fermented food waste for the first time in Korea, Korea's first privately invested sewage treatment plant, etc.

Moreover, we are actively promoting the future new renewable energy project as a new engine project for new growth. By discovering technologies in the field of environment and new renewable energy plants, as well as in-house localized technology development, we are participating in various environmental projects, such as incinerators, facilities that turn municipal waste into resources, hydrogen fuel cell power generation projects, etc.

### Key achievements

Gangbuk water purification plant, Goheung Doyang sewage treatment plant, Jinbu/Daehwa sewage treatment plant, Goyang Byeokje and Ilsan sewage treatment plants, Suwon sewage stage 1 advanced treatment facility, Noksan drainage pump station, Uijeongbu advanced sewage treatment facility, Gumi 2nd advanced sewage treatment facility, Goyang Samsung water quality restoration center, Namyangju Byeolnae water quality restoration center, Suwon sewage treatment plant 2, subtropical water regeneration center, Nakyang Moolsarang Park, Yongin wastewater treatment plant, Seongnam water purification plant advanced water treatment facility, Guri-si sewage treatment facility



#### 01 Deokso Water Purification Plant Advanced Water Treatment Facility

Construction location : Deokso-ri, Wabu-eup, Namyangju-si, Gyeonggi-do  
Construction details : Capacity Q=450,000m<sup>3</sup>/day, total ozone/H<sub>2</sub>O<sub>2</sub>+ activated carbon filter paper



#### 02 Godeok Public Sewage Treatment Facility

Construction location : 289-10, Gung-ri, Godeok-myeon, Pyeongtaek-si, Gyeonggi-do  
Construction details : Capacity Q=128,000m<sup>3</sup>/day, completely underground, construction method A2O+MBR



#### 03 Sheung Green Center Incineration Facility Environment Improvement Project

Construction location : 45, Okgucheonso-ro Sbeon-gil, Sheung-si, Gyeonggi-do  
Construction details : 200 tons/day (100 tons \* 2 units), stocker + rotary kiln type



# CIVIL WORKS

## OVERSEAS WORKS

In conjunction with the worldwide climate change problem, the global water market is growing at a rapid pace under the name of 'blue gold'.

Leading companies in developed countries are fiercely competing to dominate the blue gold market, and we are actively expanding into the overseas water market based on our expertise in the water business we have accumulated over the decades.

To fulfill the demand for water in Southeast Asia where the economy is growing at a rapid pace, we have expanded our business to Vietnam, Bangladesh, and Indonesia.

In response to the changing forms of overseas business orders, we are striving to secure sustainable growth in overseas water business competencies through the diversification of our business, such as design & build and PPP (public-private partnership) based on our overseas construction competencies we have accumulated over many years.

### Key achievements

The Water Supply and Water Utilization Project for Yarmag District in Ulaanbaatar, Mongolia (KOICA)  
Construction and Equipment for Duc Hoa Main Canal, Vietnam (ADB)  
Hoa Khanh Tay Water Supply Project, Vietnam (EDCF)  
Water Transmission Main for Distribution Networks in Al Amerat Wilayat, Oman (GOO)  
Modunaghat Water Treatment Plant and Patenga Booster Pump Station, Bangladesh (World Bank)  
Bhandal Jhuri Water Supply Project, Bangladesh (EDCF)  
Chattogram Sewage Treatment Plant Project, Bangladesh (Design Build Contract, GOB)  
Karian-Serpong Regional Water Supply Project, Indonesia (Design Build Contract, GOI)



01 Modunaghat WTP and Patenga BPS, Package W-1, Bangladesh

Construction location : Chattogram City, Bangladesh  
Construction details : Capacity Q=90,000 m<sup>3</sup>/day



02 Chattogram Sewerage, Bangladesh (DBO)

Construction location : Chattogram City, Bangladesh  
Construction details : Capacity Q=100,000 m<sup>3</sup>/day, 90km of pipelines, construction method MLE



03 Karian Waterworks, Indonesia (EPC)

Construction location : Tangerang City, Indonesia  
Construction details : Q=400,000 m<sup>3</sup>/day, water transmission pipes 28.4km



# CREATIVE VALUE COMPANY

AFFILIATED COMPANY

TAEYOUNG

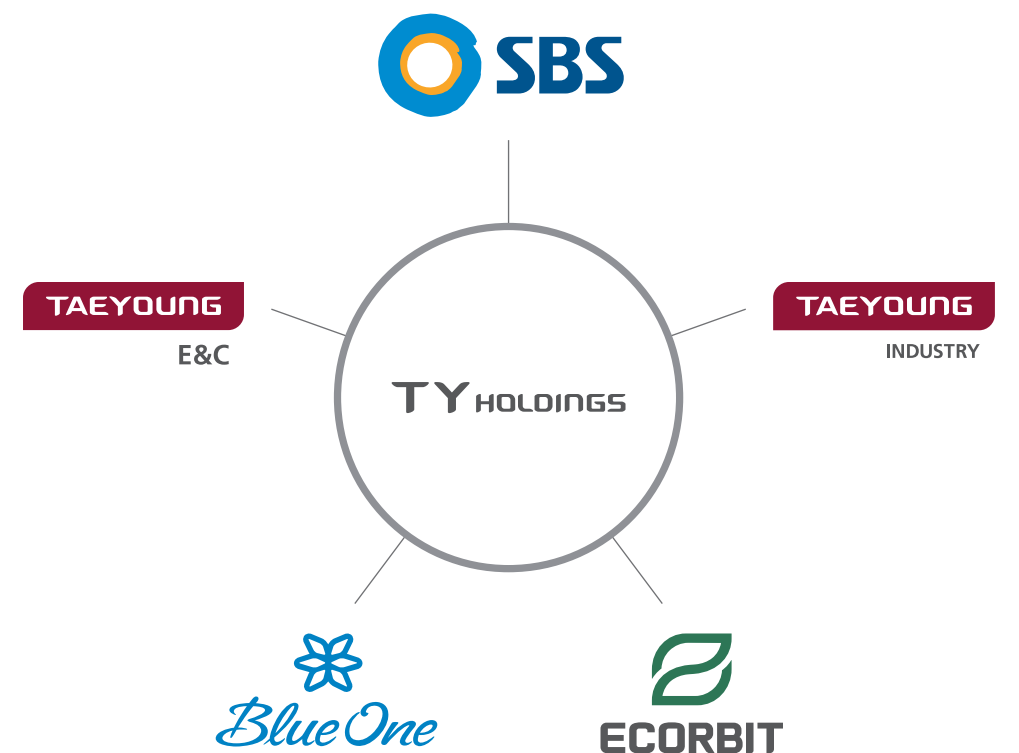




# TY HOLDINGS

Since the development of Taeyoung Development Inc. in 1973, Taeyoung Group has contributed to the nation and societal improvement by conducting various businesses in construction, media, environment, leisure, logistics, etc. On September 1, 2020, Taeyoung Group converted its corporate governance structure to a holding company system through the equity spinoff of its flagship company, Taeyoung E&C Co., Ltd. and the establishment of TY Holdings.

As the holding company of Taeyoung Group, TY Holdings owns affiliated companies with unrivaled competitiveness in each of the business fields, and is striving to boost its corporate value and shareholder value by enhancing the business expertise and management transparency of its affiliates. By leaping over and above the company's initial goals of growth and pursuit of profit, we seek to promote the public interest based on the Taeyoung spirit of 'intellect and passion, challenge and creation, trust and respect,' and we strive to fulfill our social responsibility as a company that coexists with various stakeholders. Taeyoung Group refuses to settle with its achievements to date and to cease challenging and innovating for an even bigger dream. We will create a rich future filled with hopes in which all members of society can coexist



TY Holdings is the holding company of Taeyoung Group whose businesses are centered around construction, media, and environment businesses.



# SBS

- Subsidiaries : SBS Contents Hub, SBS A&T, SBS M&C, Studio S, SBS Digital News Lab, Formatist, SBS Plus, Smart Media Lab  
Sub-subsidiary : SBS I&M



# SBS

As the only private terrestrial broadcasting company in Korea that has built a nationwide network, SBS is leading the Korean broadcasting industry with novel planning and a spirit of challenge leaping beyond limitations. The number one content company, living up to its reputation, has SBS Contents Hub, SBS A&T, SBS M&C, Studio S, SBS Digital News Lab, Formatist, SBS Plus Smart Media Lab, etc. as its subsidiaries and SBS I&M as its sub-subsidiary.

SBS Media Group is planning to take a leap forward as a global media group beyond the boundaries of Korea based on its high-quality content production competencies and diversification of distribution channels. In particular, it is expanding its influence with a focus on the United States, Japan, and China, and further to Southeast Asia, Europe, Africa, and Central and South America. SBS Media Group does not merely sell content, but continues to grow based on various global strategies such as format sales, co-production, sharing of know-how through business collaboration and localization.







# TAEYOUNG INDUSTRY

Taeyoung Industry is always striving to provide the best service that satisfies the various needs of our clients based on our rich operating know-how on tank terminals and grain silos and the latest automation equipment. Moreover, Taeyoung Industry is expanding the storage capacity of our facilities through continuous investments by establishing subsidiaries, etc., and currently, we are constructing business networks not only in the Yeongnam area, but also in the Gyeonggi/Chungcheong areas. We will continue to faithfully play our roles as a partner in helping our customers for their businesses to succeed

## Tank terminals

We own 110 units (260,850KL) of liquid cargo storage tanks as well as a dedicated pier, and we provide the best customer service by constructing a cutting-edge warehousing system.

## Grain silos

We have the latest grain silos with a storage capacity of 664,000 MT in Ulsan and Pyeongtaek Port, and we are equipped with the best automation operating system in Korea.



Ulsan Tank Terminal



grain silo

## Tank terminal customer satisfaction service

- Dedicated pier for our customers (4 ships can be berthed simultaneously)
- Underground piping connection to Ulsan Petrochemical Complex
- Customized tank rental through various capacities of tanks (300kl-10,000kl)
- Cost reduction and prevention of environmental pollution through LNG fuel use
- A warehousing system for each tank to prevent cargo pollution
- Accumulation of rich professional skills through many years of experience
- Warehousing operation under all weather conditions, 24 hours a day, 365 days a year to meet customer requirements
- Operation of a computerized control system for prompt and accurate cargo management
- Prompt online inventory management through the web
- Establishment of PSM (process safety management)
- KOSHA-MS, ISO 9001&14001, and CDI-T certifications

## Grain silo customer satisfaction service

- Provision of tailored services optimized to customer requirements
- Prompt customs management based on the EDI system
- Operation of a CST (customer service team) to resolve customer complaints
- Real-time provision of customer information through the web
- Real-time monitoring of the temperature of the grains in the bin, maintenance of the highest quality
- Construction of dust explosion suppression equipment within the facility
- Operation of vehicle disinfection facilities to prevent livestock diseases
- Dedicated unloaders/silos for feed supplements (quality improvement)



#### ECORBIT Co., Ltd

ECORBIT GREEN Co., Ltd.  
ECORBIT GREEN CHUNGJU Co., Ltd.  
ECORBIT GREEN CHEONGJU Co., Ltd.  
YEONGCHEON ECO Co., Ltd.

ECORBIT ENERGY Co., Ltd.  
ECORBIT ENERGY GYEONGSAN Co., Ltd.  
ECORBIT ENERGY GWANGJU Co., Ltd.  
ECORBIT ENERGY GYEONGJU Co., Ltd.  
ECORBIT ENERGY CHEONGWON Co., Ltd.  
ECORBIT ENERGY SEJONG Co., Ltd.  
ECORBIT ENERGY JEONGSE Co., Ltd.  
ECORBIT ENERGY MYEONGSEONG Co., Ltd.  
ECORBIT ENERGY JEONJU Co., Ltd.  
ECORBIT ENERGY ULSAN Co., Ltd.  
ECORBIT LOGIS Co., Ltd.  
ECORBIT ENSOL Co., Ltd.  
ECORBIT WATER Co., Ltd.  
ECORBIT M&S Co., Ltd.  
ECORBIT PRETECH Co., Ltd. ECORBIT ENGINEERING Co., Ltd.  
ECORBIT ENGINEERING VIETNAM Co., Ltd.

# ECORBIT

ECORBIT, which was founded in 2004 as Taeyoung Environment, is Korea's largest/top comprehensive environmental company that performs water treatment, waste, and resource recycling projects.

We perform water treatment businesses such as water and sewage works, industrial/livestock wastewater treatment and reuse, power generation water supply, waste business such as medical/industrial waste incineration, general/designated waste burying and waste collection/transportation, and resource circulation business such as urban mining and soil remediation.

We are expanding an omnidirectional value chain across all environmental businesses.

ECORBIT provides a total solution from project development, design, construction and maintenance through various experiences and technical know-how on environmental problems faced by customers in all environmental business areas. We propose sustainable technological innovation and the best solutions to create environmental values for a healthy and rich future society



Gimcheon Sewage Treatment Plant



ECORBIT GREEN Chungju



ECORBIT ENERGY Co., Ltd. Gyeongsan

#### Differentiated quality policies

- Minimization of the concentration of emission through stringent facility operation, process monitoring, and control
- 100% operation rate through periodic equipment inspection and maintenance
- Inspiration of local residents' environmental awareness through field trips and events related to the environment

#### Key operational management achievements

- 607 public sewage treatment facilities (including small-scale village sewages)
- 19 wastewater treatment facilities
- 20 BTL/BTO (sewage treatment facilities, sewers, incineration)
- Biogas plant: 3 locations including Yeongcheon, Pocheon, and Haman
- Soil remediation facilities: 5 locations including Gyeongju, Yeosu, Chungju, etc.
- Medical waste incineration: 5 locations including Gyeongsan, Gwangju, Gyeongju, etc.
- Industrial waste incineration: 3 locations including Sejong, Jeongse, and Myeongseong
- Urban mining: 4 locations including Jincheon, Miryang, Yeongcheon, etc.
- SRF/ASR: 3 locations including Ulsan, Jeonju, and Asan

#### Key construction achievements

- Ulsan SRF boiler steam supply business
- Construction of bicycle road photovoltaic power station in Asan-si
- Construction of waste treatment facility in Seosan Auto Valley
- Janghang Smelting Factory's smelter site soil remediation project (section 3)
- The 39th Division site development project, soil pollution remediation project
- Supply of water treatment equipment for UAE BNPP Units 1-4 Nuclear Power Plant
- Supply and installation of wastewater treatment equipment to SK Hynix (Icheon)
- Supply and installation of zero liquid discharge (ZLD) equipment for desulfurization wastewater in Goseong
- Secondary pre-treatment of batteries (9,000 units of Kona recalled)
- General industrial complex waste landfill creation project in Chungju Megapolis

#### Current technology status

- Sewage/wastewater treatment technology: 39 patents, 1 new technology
- Sludge treatment technology: 6 patents
- Water treatment material technology: 68 patents (49 cases for separation membrane, 19 cases for EDI)
- Soil remediation technology: 23 patents



#### High-end comprehensive resort BlueOne

'BlueOne' is a compound of the words 'blue', which represents clean and pure nature along with new hopes, and 'one', which suggests that humans and the nature have become one, in pursuit of becoming a first-class quality resort. BlueOne is an all year-round comprehensive resort that operates golf courses, condominiums, and water parks in Yongin, Gyeongju, and Sangju, thereby providing customers with beautiful nature and quality rest.

# BLUEONE

BlueOne Yongin CC, which boasts the tradition and honor of hosting the KLPGA major competition "Taeyoungbae Korean Women's Open", is recognized as one of Korea's high-end golf clubs for its beautiful scenery of the nature and diverse courses at the foot of Gubong Mountain.

BlueOne Sangju Golf Resort, which boasts the world's top golf resort quality, is an eco-friendly leisure space in which the beautiful natural environment and courses optimized for golf games harmonize perfectly.

At Gyeongju BlueOne The Honors CC, a high-end country club that represents the Yeongnam area, roundings can be enjoyed all year-round in a natural environment while being able to appreciate the Gyeongju Bomun Tourist Complex at a glance.

BlueOne Water Park, an eco-friendly leisure facility that can be enjoyed by families, offers thrills with water activity facilities such as an outdoor wave pool boasting the tallest wave of 2.6 meters in Korea.

BlueOne's Family Condos boast a cooling view of the Water Park, presenting the best relaxing experience in a private condo where one can take a complete break in nature.

Luna X CC, a golf course of a new concept that demonstrates innovation in golf courses, is Korea's very first 24-hole golf course in 6-hole units and it is a smart golf course where easy and convenient self-rounding can be enjoyed by anyone.





The customer-centered management of Taeyoung  
Construction begins with our commitment  
to listen to our customers' needs  
and we will continue to do so until the future values  
that customers dream of being realized.





111, YEONGNONGWON-RO, YEONGDEUNGPO-GU, SEOUL, PHONE +82-2-2090-2200 (YEONDO OFFICE BUILDING) / 20, SING-RO, GWANGMYEONG-SI, GYEONGGI-DO, PHONE +82-2-2151-6999 (GWANGMYEONG HEADQUARTERS)